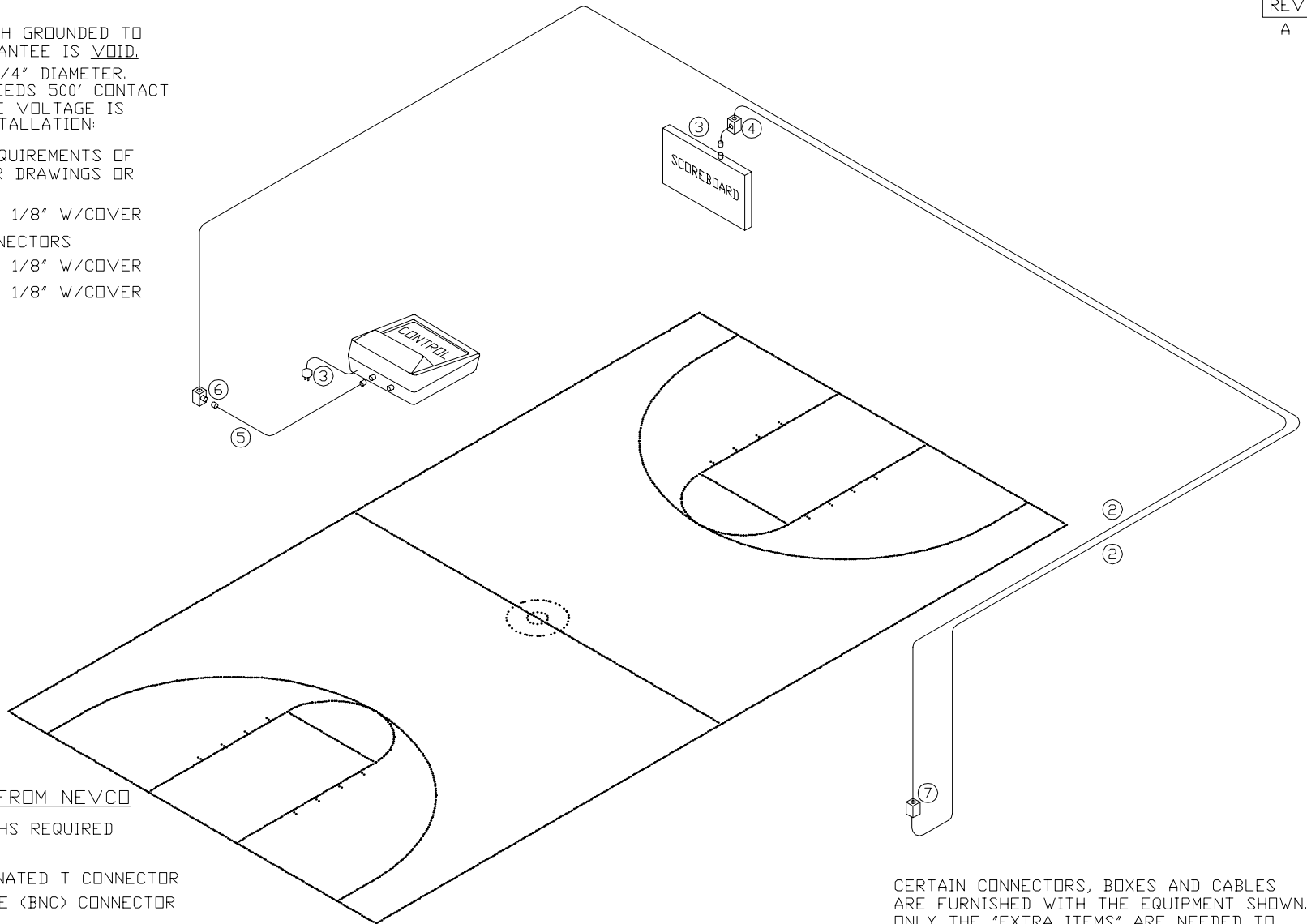


NOTES

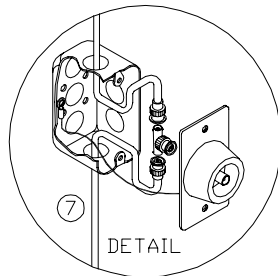
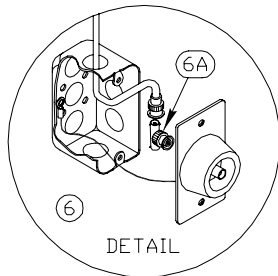
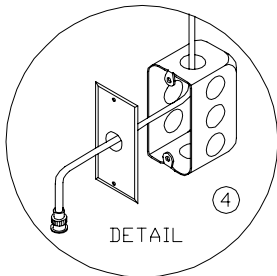
1. WALL BOXES MUST BE EARTH GROUNDED TO THE SAME GROUND OR GUARANTEE IS VOID.
2. CONTROL CABLE RG-58/U, 1/4" DIAMETER. IF ANY CABLE LENGTH EXCEEDS 500' CONTACT THE NEVCO FACTORY. CABLE VOLTAGE IS 5 VOLTS. FOR CONDUIT INSTALLATION: 1/2" CONDUIT REQUIRED
3. FOR ELECTRICAL POWER REQUIREMENTS OF EACH ITEM REFER TO OTHER DRAWINGS OR SPECIFICATIONS.
4. WALL BOX 4" x 2 1/8" x 2 1/8" W/COVER
5. CONTROL CABLE 25' W/CONNECTORS
6. WALL BOX 4" x 2 1/8" x 2 1/8" W/COVER
7. WALL BOX 4" x 2 1/8" x 2 1/8" W/COVER




EXTRA ITEMS TO ORDER FROM NEVCO

- 2 009-0084 (2 EA.) LENGTHS REQUIRED
- 7 239-0081 (1 EA.)
- 6A 210-0007 (1 EA.) TERMINATED T CONNECTOR
- 210-0008 (2 EA.) 2-WIRE (BNC) CONNECTOR

CERTAIN CONNECTORS, BOXES AND CABLES ARE FURNISHED WITH THE EQUIPMENT SHOWN. ONLY THE "EXTRA ITEMS" ARE NEEDED TO COMPLETE THIS SYSTEM.



BASKETBALL SINGLE SCOREBOARD W/ALTERNATE CONTROL POINTS SYSTEM		 NEVCO SCOREBOARD CO. GREENVILLE, ILLINOIS 62246
DRAWING NO. C5829		
DRAWN HW	DATE 3/26/92	SHEET 1 OF 1